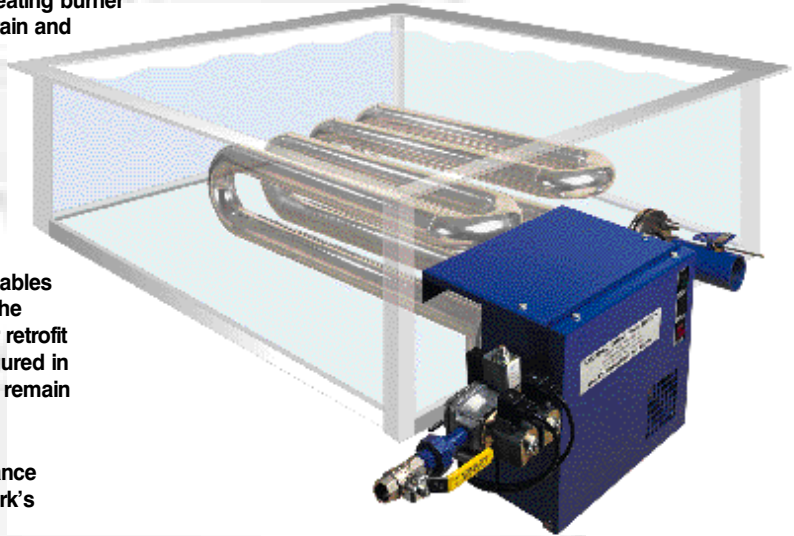


Lanemark TRX series packaged, high efficiency, small diameter immersion tube tank heating systems meet the needs of industrial process tanks which have heat input requirements of up to 45 kW (150,000 Btu/h). Built to the same exacting standards as the larger capacity TX modular tank heating burner systems, the TRX burner incorporates burner, gas train and control system and is packaged to simplify/minimise plant installation work.

Specific advantages compared with alternative tank heating methods –

- Low operating costs – operating efficiencies of
 - ≥80% gross calorific value
 - ≥90% net calorific value
- TRX small diameter immersion tube heat exchangers occupy minimal tank space. This enables smaller tanks for new plant designs and allows the simple replacement of other heating systems for retrofit applications. TRX immersion tubes can be configured in almost any multi-pass shape to ensure that they remain well clear of any internal tank fittings or processing areas.
- All tank heat input and immersion tube performance calculations are easily carried out using Lanemark's dedicated computer design software.
- Induced draught combustion air system allows multiple burner systems to be connected to a common flue while retaining individual burner control.
- Operates with low gas supply pressures.
- Firing into rubber lined or fibre glass tanks is permitted due to low initial heat exchanger surface temperatures at tank connection.
- Simple heat exchanger installation requires only two pipe flange drillings, usually in one tank wall.
- Fully compatible with Lanemark TX burner systems so that they may be incorporated into schemes where multiple TRX/TX burner arrangements are required.



Model	Tube Size	Maximum Heat Input	
TRX15	1½" (40mm)	45 kW	(150,000 Btu/h)
TRX20	2" (50mm)	45 kW	(150,000 Btu/h)

Typical Applications

- **Product finishing**
(metal parts, steel strip, wire products, etc.)
 - Pre-treatment and treatment processes including:
 - alkali/caustic degreasing
 - phosphating
 - hot water rinsing
 - aluminium etching
 - anodising
 - borax and lime coatings
 - Dip tanks
 - Spray systems
 - Hot water supply systems
- **Cleaning**
(industrial washing machines)
 - Plastic crate washers
 - Parts washers
 - Bottle washers
- **Food and Drink Production**
 - Hot water tanks
 - Mini brewery wort coppers
 - Cleaning in place (CIP) tanks
 - Animal scalders
 - Blanchers

TRX burners conform with European Standards EN 676 and EN 746 as appropriate and are pre-wired and tested prior to despatch.

Specifications

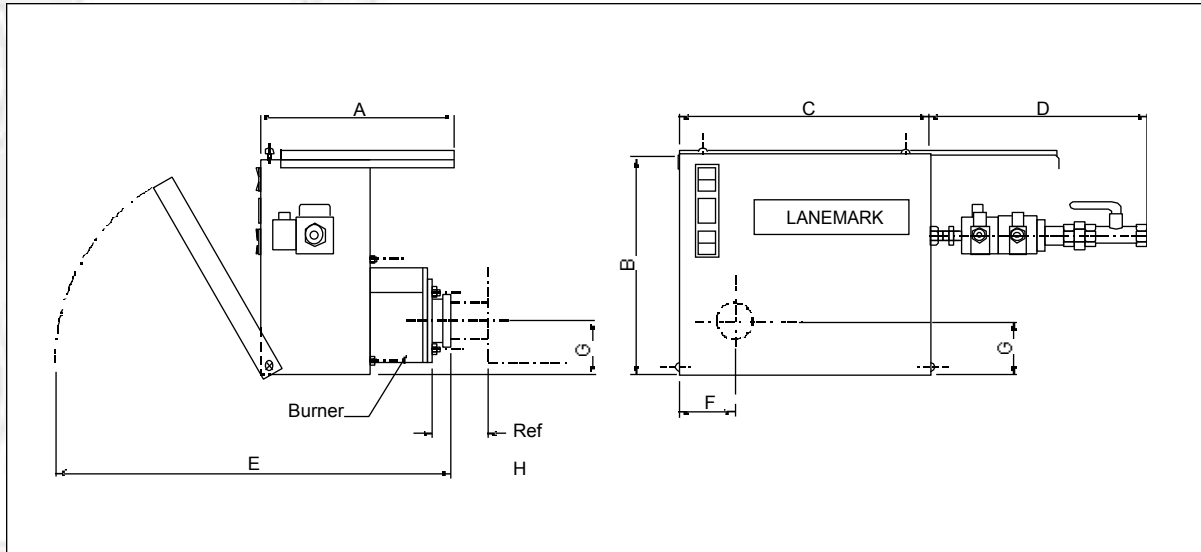
Lanemark packaged TRX immersion tube burner systems are assembled within a splash-proof enclosure and incorporate the burner, gas valve train and burner controls,

exhaust damper and an exhaust fan which can be coupled to multiple TRX/TX burner installations.

	✓ Standard equipment	● Options
Fuels	✓ Natural gas	● Propane
Control voltages	✓ 230V	● 110V
Exhaust fan electrical supplies	✓ 400V/3ph/50Hz	● 230V/1ph/50Hz
Flame sensing	✓ Flame electrode	
Heat output control options	✓ On/off or High/low	

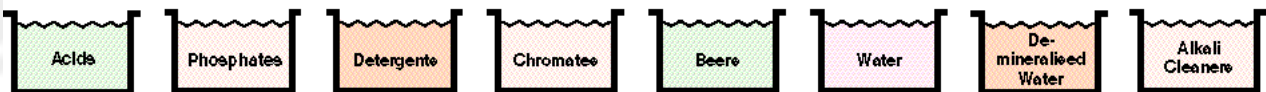
DIMENSIONS & PERFORMANCE

TRX TANK HEATING SYSTEMS



MODEL NO.	DIMENSIONS							
	A	B	C	D	E	F	G	H
TRX15	254	288	396	285	523	75	70	75
TRX20	254	288	396	285	523	75	70	75

All dimensions are in mm, except where stated.



All TRX burners benefit from Lanemark's BurnerCare customer support. BurnerCare services include burner system commissioning/start-up, supply of spare parts and system training. BurnerCare will provide a contract service plan and a rapid response facility, designed to ensure the continued and reliable operation of Lanemark equipment worldwide.

Additional Burner Products *(See individual Data Sheets for full details)*

Also available from Lanemark is the TX range of larger capacity modular tank heaters and the FD range of high turn-down process air heating oven and dryer burner products.

All illustrations are for guidance only. For reasons of continuous development, Lanemark International Limited reserves the right to alter specifications without prior notice.



Lanemark House, Whitacre Road, Nuneaton, Warwickshire CV11 6BW United Kingdom

Tel: +44 (0) 1203 352000 Fax: +44 (0) 1203 341166

E-mail: info@lanemark.com Web site: <http://www.lanemark.com>



REGISTRATION NO. 7237

